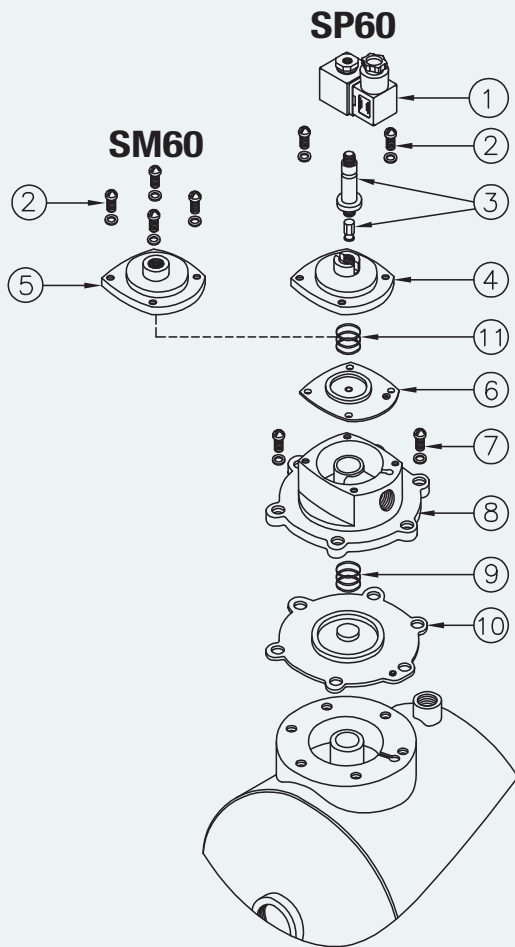
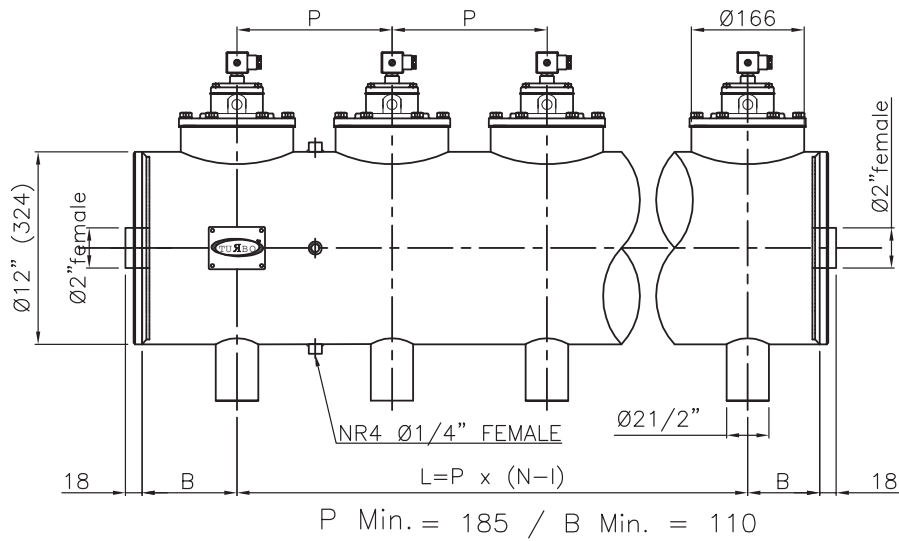


12" INTEGRAL Series dn 12" with valves 2 1/2"



DESCRIPTION	VALVE SM60/ SP60
1 Coil + Din connector	BH10...V/50-60Hz
2 Screws + Washer	VTE6x20+VROS6
3 Pole assembly	GPC 10
4 Cover	TCOP 25
5 Remote operated cover	TCOP25FM
6 Diaphragm	M25
7 Screws + Washer	VTE10x25+VROS10
8 Cover	TCOP50G
9 Spring	TMOL40
10 Main diaphragm	M50
11 Spring	TMOL10G

