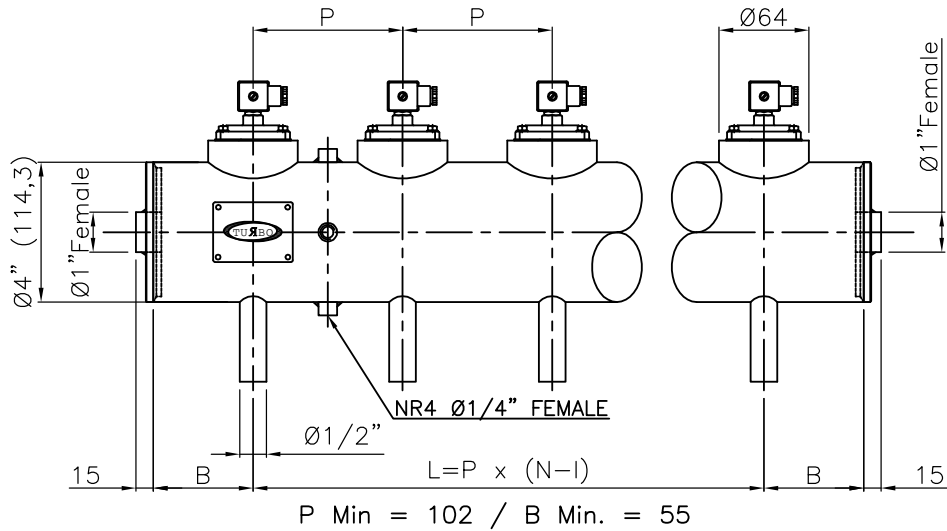


## INTEGRAL Series dn 4" with valves 1/2"

4"



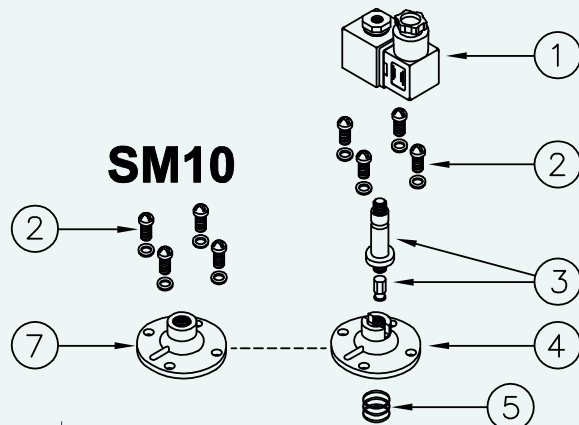
$P \text{ Min} = 102 / B \text{ Min.} = 55$

### DESCRIPTION

### VALVE SM10/SP10

1	Coil + Din connector	BH10...V/50-60Hz
2	Screws + Washer	VTE6x18+VROS6
3	Pole assembly	GPC 10
4	Cover	TCOP 10
5	Spring	TMOLL25GNEW
6	Diaphragm	G10/GMD
7	Remote operated cover	TCOP10FM

### SP10



### SM10

