

SQ Series Ø 1"1/2



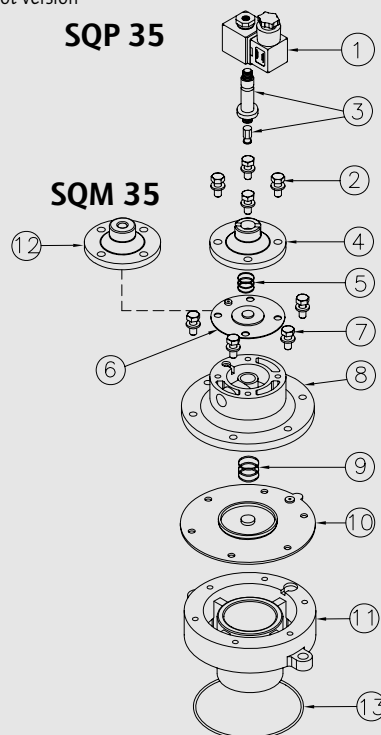
CARACTERISTICS

Fluid	Filtered and oilfree compressed air
Temperature range	STD diaphragm -40°C; +80°C Viton diaphragm -30°C; +200°C
Operating pressure	min. 0,5; max 7,5 bar
Body & cover	Die cast aluminium
Core tube	Stainless Steel
Plunger	Stainless Steel
Screws	Stainless Steel
Coil insulation	Class H
Connector	PG 9; IP65 DIN 43650 ISO 4400
Standard voltages	230 -110 - 24V / 50-60VHz 19 VA 24VDC 15W

DESCRIPTION	SQP35/SQM35
1 Coil+Connector	BH10...V/50-60Hz
2 Screws+Washer	VTE6x20+VROS6
3 Pole assembly	GPC 10
4 Cover	TCOP 10
5 Spring	TMOL25
6 Diaphragm	M10
7 Screws+Washer	VTE8x20+VROS8
8 Main cover	TCOP35N
9 Spring	TMOL40
10 Main diaphragm	M35-S
11 Body	TCOR35FMGS
12 Cover remote operated	TCOP10FM
13 O-Ring	OR 6337

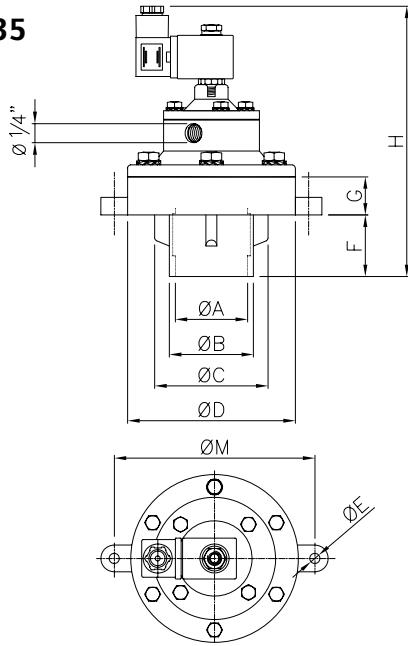
SQPO Integral solenoid pilot version

SQMO Remote pilot version

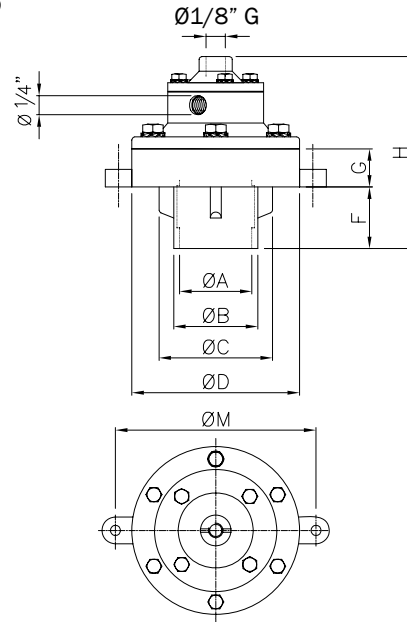


Dimensions $\varnothing 1\frac{1}{2}$ **SQ** Series

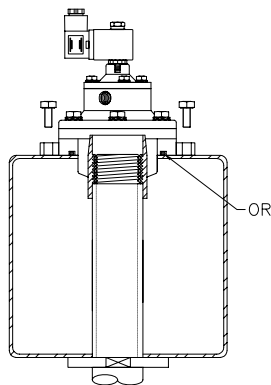
SQP 35



SQM 35



Installation SQP 35



Model	Ø A	Ø B	Ø C	Ø D	Ø E	F	G	H	Ø M	Weight (Kg)
SQPO 35	1"1/2	57	80,4x70,3	114	9	42	26	162	130	1,3
SQMO 35	1"1/2	57	80,4x70,3	114	9	42	26	104	130	1,1