

SQ Series Ø 1"

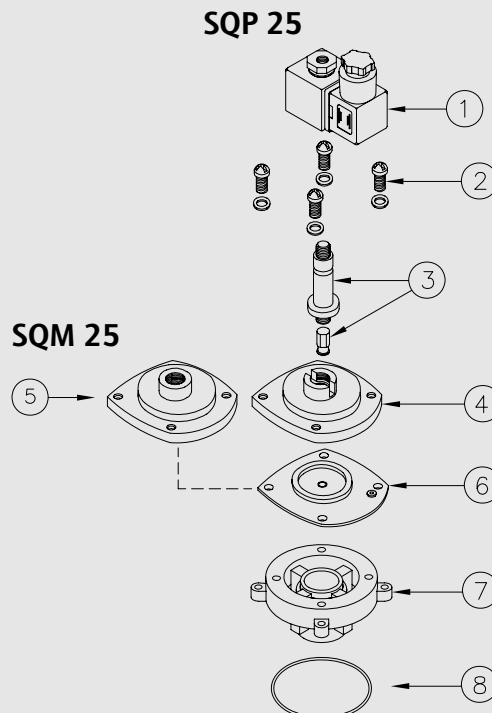


**CARACTERISTICS**

<b>Fluid</b>	Filtered and oilfree compressed air
<b>Temperature range</b>	STD diaphragm -40°C; +80°C Viton diaphragm -30°C; +200°C
<b>Operating pressure</b>	min 0,5; max 7,5 bar
<b>Body &amp; cover</b>	Die cast aluminium
<b>Core tube</b>	Stainless Steel
<b>Plunger</b>	Stainless Steel
<b>Screws</b>	Stainless Steel
<b>Coil insulation</b>	Class H
<b>Connector</b>	PG 9; IP65 DIN 43650 ISO 4400
<b>Standard voltages</b>	230 -110 - 24V / 50-60VHz 19 VA 24VDC 15W

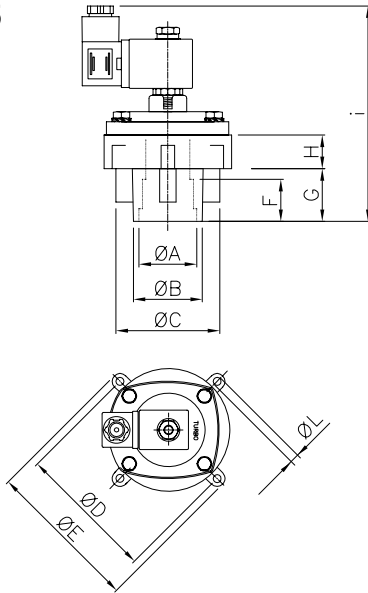
DESCRIPTION	SQP25/SQM25
1 Coil+Connector	BH10...V/50-60Hz
2 Screws+Washer	VTE6x20+VRO56
3 Pole assembly	GPC 10
4 Cover	TCOP 25
5 Cover remote operated	TCOP25FM
6 Diaphragm	M25
7 Body	TCOR25IM
8 O-Ring	OR 65x4

**SQPO** Integral solenoid pilot version  
**SQMO** Remote pilot version

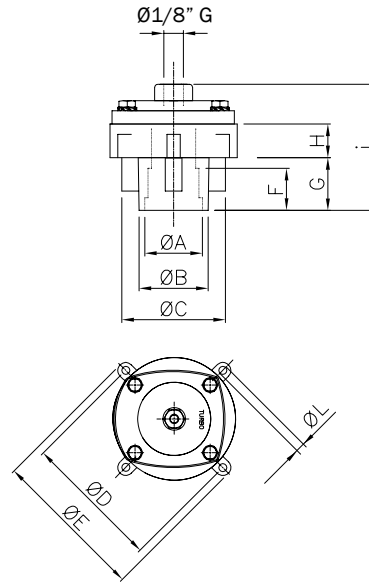


Dimensions mm **SQ** Series

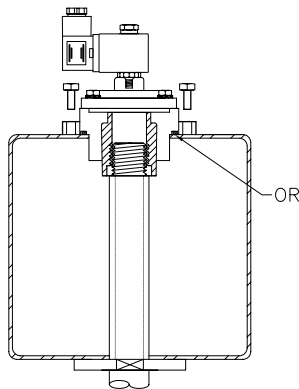
SQP 25



SQM 25



Installation SQP 25/ SQM 25



Model	Ø A	Ø B	Ø C	Ø D	Ø E	Ø M	F	G	H	I	Ø L	Weight (Kg)
SQP 25	1"	41,4	62,2	104	116	92	25	31,5	20,2	136	6,2	0,6
SQM 25	1"	41,4	62,2	104	116	92	25	31,5	20,2	78	6,2	0,5