

SQ Series Ø 2" - 2"1/2 - 3" - 4"

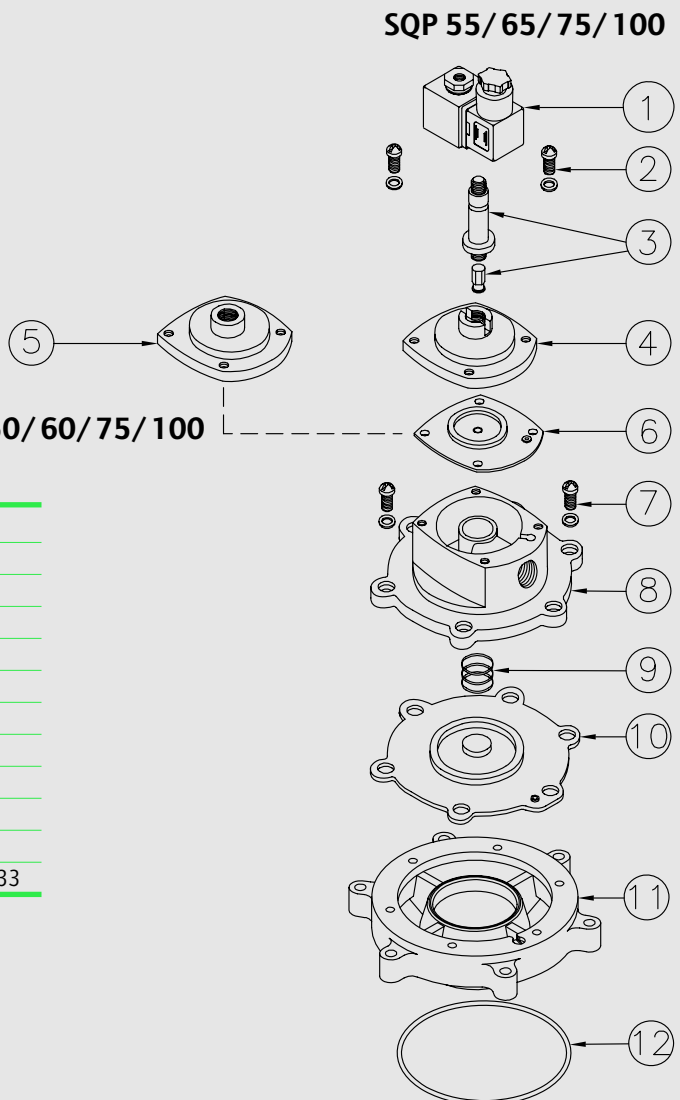


CHARACTERISTICS

Fluid	Filtered and oilfree compressed air
Temperature range	STD diaphragm -40°C; +80°C Viton diaphragm -30°C; +200°C
Operating pressure	min. 0,5; max 7,5 bar
Body & cover	Die cast aluminium
Core tube	Stainless Steel
Plunger	Stainless Steel
Screws	Stainless Steel
Coil insulation	Class H
Connector	PG 9; IP65 DIN 43650 ISO 4400
Standard voltages	230 -110 - 24V / 50-60VHz 19 VA 24VDC 15W

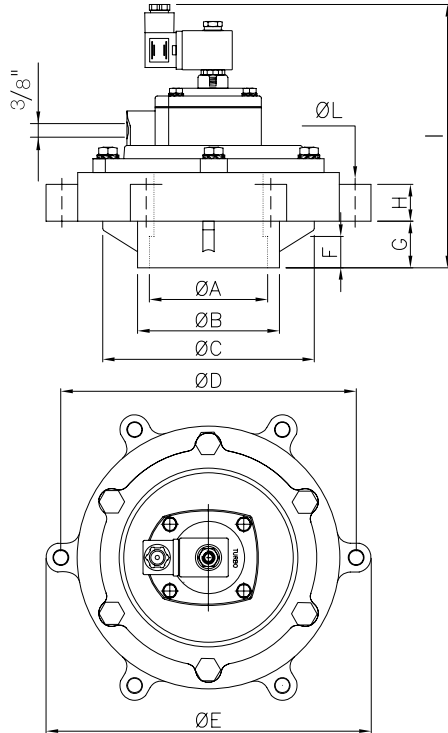
DESCRIPTION	SQP55/ 65
1 Coil+Connector	BH10...V/50-60Hz
2 Screws+Washer	VTE6x20+VROS6
3 Pole assembly	GPC 10
4 Cover	TCOP 25
5 Cover remote operate	TCOP25FM
6 Diaphragm	M25
7 Screws+Washer	VTE10x20+VROS10
8 Cover	TCOP50G
9 Spring	TMOL40
10 Main diaphragm	M50
11 Body	TCOR50FG - TCOR60FG
12 O-Ring	OR 133 35x5,33

DESCRIPTION	SQP75/100
1 Coil+Connector	BH10...V/50-60Hz
2 Screws+Washer	VTE6x20+VROS6
3 Pole assembly	GPC 10
4 Cover	TCOP 25
5 Cover remote operate	TCOP25FM
6 Diaphragm	M25
7 Screws+Washer	VTE10x25+VROS10
8 Cover	TCOP65G
9 Spring	TMOL40
10 Main diaphragm	M75
11 Body	TCOR75FLQ - TCOR100FLQ
12 O-Ring	OR 177 17x6,99 - OR 100 17x5,33

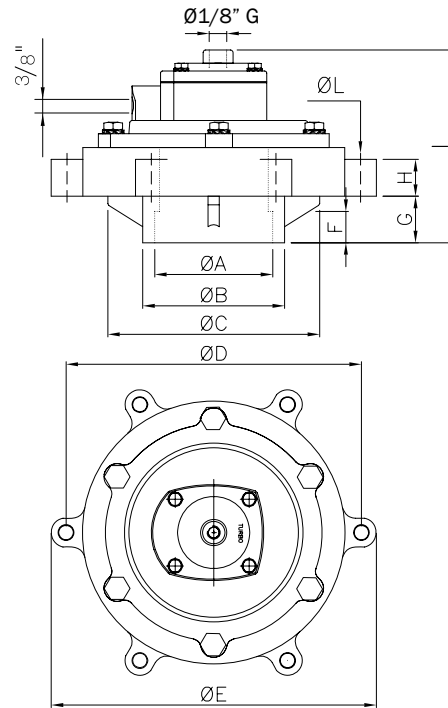


Dimensions Ø 2" - 2"½ - 3" - 4" **SQ** Series

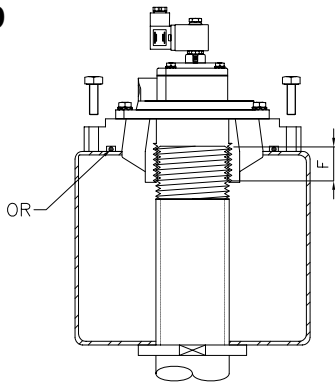
SQP 50/60/75/100



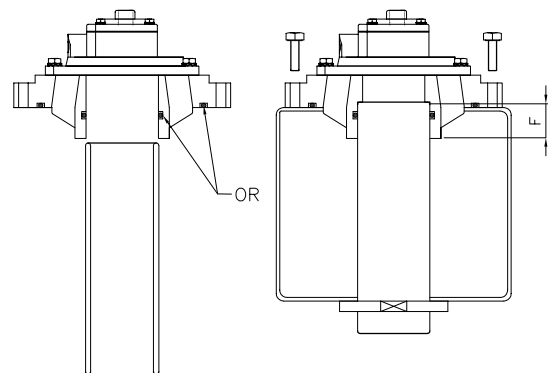
SQM 50/60/75/100



SQM 50/60
SQP 50/60



SQM 75/100 PUSH IN
SQP 75/100 PUSH IN



Model	Ø A	Ø B	Ø C	Ø D	Ø E	F	G	H	I	Ø L	Weight (Kg)
SQP 50	2"	83	126	175	195	39	60	20	211	11	2,4
SQP 60	2"½	83	126	175	195	39	60	20	211	11	2,2
SQP 75-IN	3"	107,5	161	225	247	44	35,5	27	206	11	3,6
SQP 100-IN	4" (101,6 mm)	119,5	161	225	247	44	35,5	27	206	11	3,5
SQM 50	2"	83	126	175	195	39	60	20	153	11	2,2
SQM 60	2"½	83	126	175	195	39	60	20	153	11	2
SQM 75-IN	3"	107,5	161	225	247	44	35,5	27	148	11	3,6
SQM 100-IN	4" (101,6 mm)	119,5	161	225	247	44	35,5	27	148	11	3,3