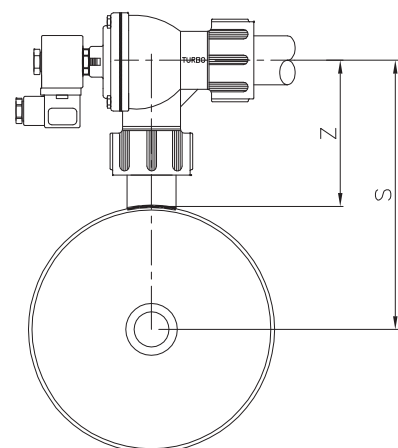
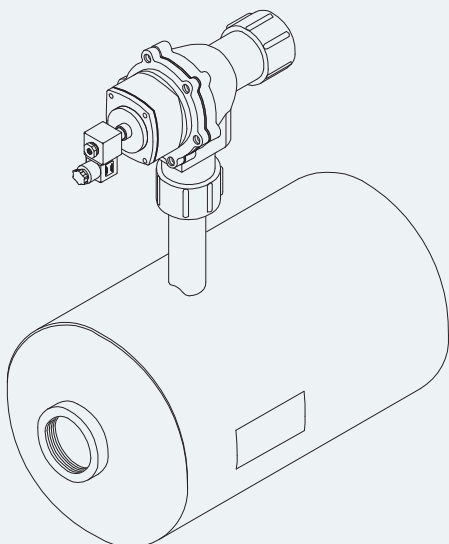


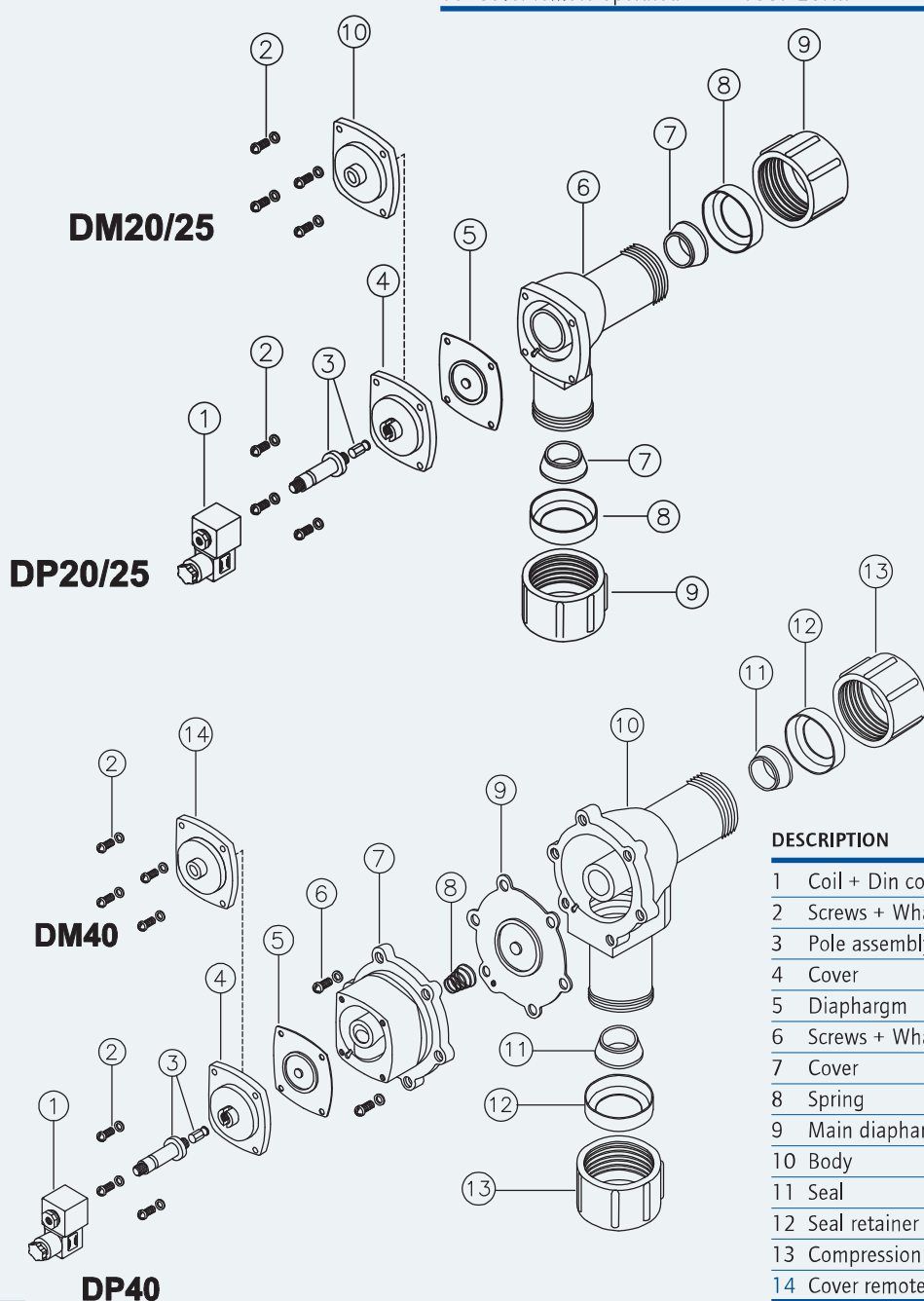
$$L = Px(N-1)+2A+2B; \quad P = \text{Pitch mm};$$

$$N = \text{Quantity of stubs}$$

Ø	Ø(est)mm	ØE	A	B(min)	ØF(GAS)	H	M	Z(±)	S(±)	P(min)
5"	140	3/4"	50	40	1"	15	85	127	197	85
5"	140	1"	50	40	1"	15	85	130	200	85
6"	168,3	3/4"	50	40	1"	15	85	127	211	85
6"	168,3	1"	50	40	1"	15	85	130	214	85
6"	168,3	1 1/2"	50	40	1"	15	85	138	222	150
8"	219,1	1"	70	40	1 1/2"	18	85	130	240	85
8"	219,1	1 1/2"	70	40	1 1/2"	18	85	138	248	150
10"	273	1 1/2"	90	40	1 1/2"	18	85	130	267	150



DESCRIPTION	VALVE DP/DM20	VALVE DP/DM25
1 Coil + Din connector	BH10...V/50-60Hz	BH10...V/50-60Hz
2 Screws + Washer	VTE6x20+VROS6	VTE6x20+VROS6
3 Pole assembly	GPC 10	GPC 10
4 Cover	TCOP 25	TCOP 25
5 Diaphragm	M25	M25
6 Body	TCOR20/25MMG	TCOR25MMG
7 Seal	GCON20	GCON25
8 Seal retainer	OG20	OG25
9 Compression nut	TDAL20/25	TDAL25
10 Cover remote operated	TCOP 25FM	TCOP 25FM



DESCRIPTION	VALVE DP40/DM40
1 Coil + Din connector	BH10...V/50-60Hz
2 Screws + Washer	VTE6x20 + VROS6
3 Pole assembly	GPC 10
4 Cover	TCOP 25
5 Diaphragm	M25
6 Screws + Washer	VTE8x20 + VROS8
7 Cover	TCOP40N
8 Spring	TMOL40
9 Main diaphragm	M40
10 Body	TCOR40MMG
11 Seal	GCON40
12 Seal retainer	OG20
13 Compression Nut	TDAL40
14 Cover remote operated	TCOP 25FM