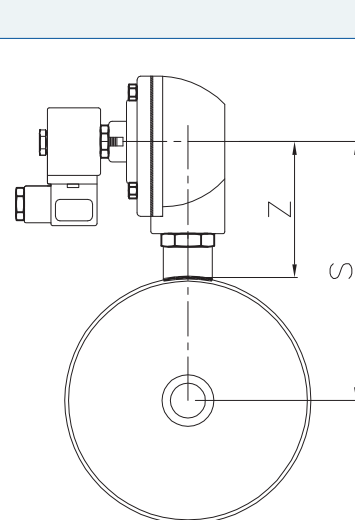
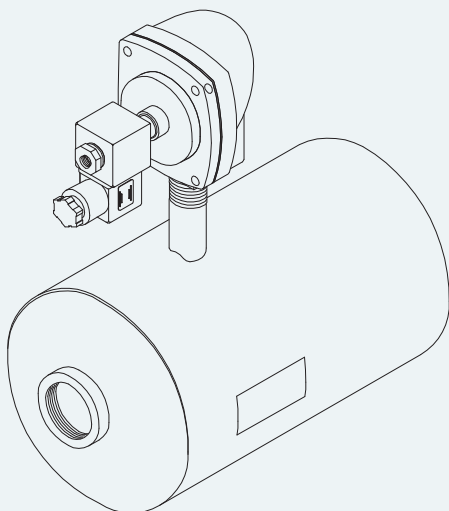


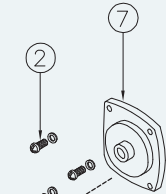
$L = Px(N-1)+2A+2B$; P = Pitch mm;

N = Quantity of stub pipes

| Ø | Ø (est) mm | Ø E | A | B (min) | Ø F | H | M | R | Z(±) | S(±) | P (min) |
|-----|------------|-----|----|---------|-----|----|----|----|------|------|---------|
| 5" | 140 | ¾" | 50 | 40 | 1" | 15 | 85 | 40 | 120 | 190 | 85 |
| 5" | 140 | 1" | 50 | 40 | 1" | 15 | 85 | 40 | 120 | 190 | 85 |
| 6" | 168,3 | ¾" | 50 | 40 | 1" | 15 | 85 | 40 | 120 | 204 | 85 |
| 6" | 168,3 | 1" | 50 | 40 | 1" | 15 | 85 | 40 | 120 | 204 | 85 |
| 6" | 168,3 | 1½" | 50 | 40 | 1" | 15 | 85 | 40 | 136 | 220 | 150 |
| 8" | 219,1 | 1" | 70 | 40 | 1½" | 18 | 85 | 40 | 120 | 229 | 85 |
| 8" | 219,1 | 1½" | 70 | 40 | 1½" | 18 | 85 | 40 | 136 | 245 | 150 |
| 8" | 219,1 | 2" | 70 | 65 | 1½" | 18 | 75 | 40 | 164 | 273 | 210 |
| 10" | 273 | 1½" | 90 | 40 | 1½" | 18 | 85 | 40 | 136 | 272 | 150 |
| 10" | 273 | 2" | 90 | 65 | 1½" | 18 | 75 | 40 | 164 | 300 | 210 |
| 10" | 273 | 2½" | 90 | 65 | 1½" | 18 | 75 | 40 | 164 | 300 | 210 |

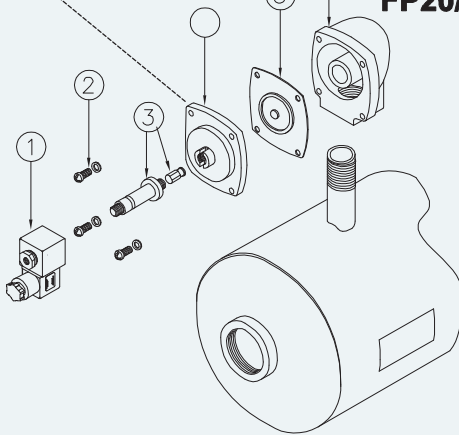


FM20/25

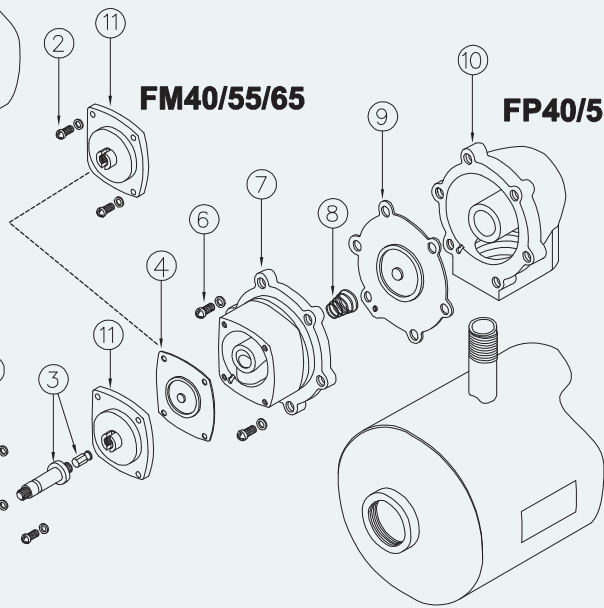


| DESCRIPTION | VALVE FP/FM20 | VALVE FP/FM25 |
|-------------------------|------------------|------------------|
| 1 Coil + Din connector | BH10...V/50-60Hz | BH10...V/50-60Hz |
| 2 Screws + Washer | VTE6x20+VROS6 | VTE6x20+VROS6 |
| 3 Pole assembly | GPC 10 | GPC 10 |
| 4 Cover | TCOP25 | TCO25 |
| 5 Diaphragm | M25 | M25 |
| 6 Body | TCOR20FFG | TCOR25FFG |
| 7 Cover remote operated | TCOP25FM | TCOP25FM |

FP20/25



FM40/55/65



FP40/55/65

| DESCRIPTION | VALVE FP/FM40 | VALVE FP/FM55 | VALVE FP/FM65 |
|--------------------------|------------------|------------------|------------------|
| 1 Coil + Din connector | BH10...V/50-60Hz | BH10...V/50-60Hz | BH10...V/50-60Hz |
| 2 Screws + Washer | VTE6x20+VROS6 | VTE6x20+VROS6 | VTE6x20+VROS6 |
| 3 Pole assembly | GPC 10 | GPC 10 | GPC 10 |
| 4 Cover | TCOP 25 | TCOP 25 | TCOP 25 |
| 5 Diaphragm | M25 | M25 | M25 |
| 6 Screws + Washer | VTE8x20+VROS8 | VTE10x25+VROS10 | VTE10x25+VROS10 |
| 7 Cover | TCOP40 | TCOP65G | TCOP65G |
| 8 Spring | TMOL40 | TMOL40 | TMOL40 |
| 9 Main diaphragm | M40 | M55 | M65 |
| 10 Body | TCOR40FFG | TCOR55FFG | TCOR65FFG |
| 11 Cover remote operated | TCOP 25FM | TCOP 25FM | TCOP 25FM |